

## Features

- It is used for different kinds of modules and applied to the working area subsystem.
- It used embedded surface frame, easy to install and disassemble, it is with protective door and dusty free.
- With application of fiber SC/LC simplex, duplex and other different environment installed plate or flush plate. All modules can be configured on customer's choice.
- Cable management can be connected without cutting (with express port)

## Area of Operation

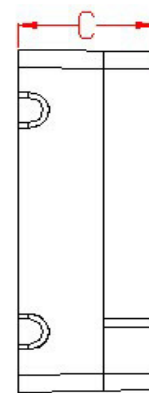
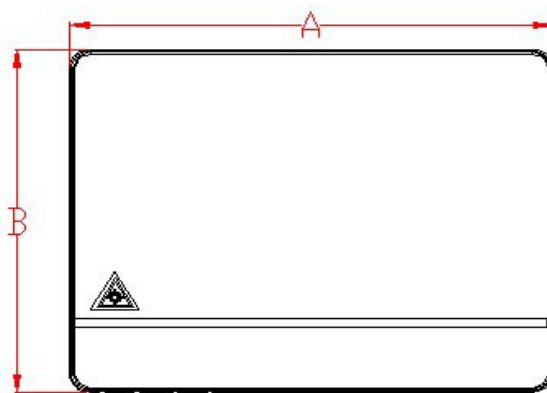
- The telecommunication network, metropolitan area network, optical fiber communication system.
- Optical testing equipment/instrument.
- CATV optical fiber, optical fiber sensor.
- Optical fiber broadband access network, FTTH optical fiber.
- Optical fiber distribution frame, frame type and wall type optical fiber distribution unit.

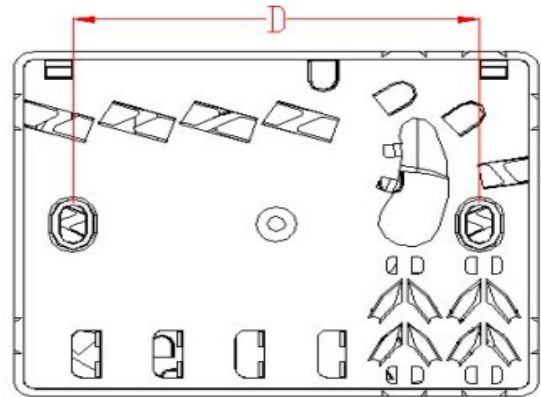
### Performance Index

Application	3.0x2.0mm drop cable or indoor cable
Fiber diameter	125um (652 & 657)
Tight Cladding diameter	250um & 900um
Mode of application	Single mode & duplex mode
Tensile strength	>50 N
End-use temperature	-40 ~ +85 degree celsius
Adaptor	SC & LC
Insertion Loss	<= 0.2 dB (1310mm & 1550mm)
Output	4

### Configuration table

Model	Size (LxWxH) mm	Max Capacity		
		SC	LC	PLC
FFTTH4	100x80x29	4	8	8





Product inside structure and cable ways

